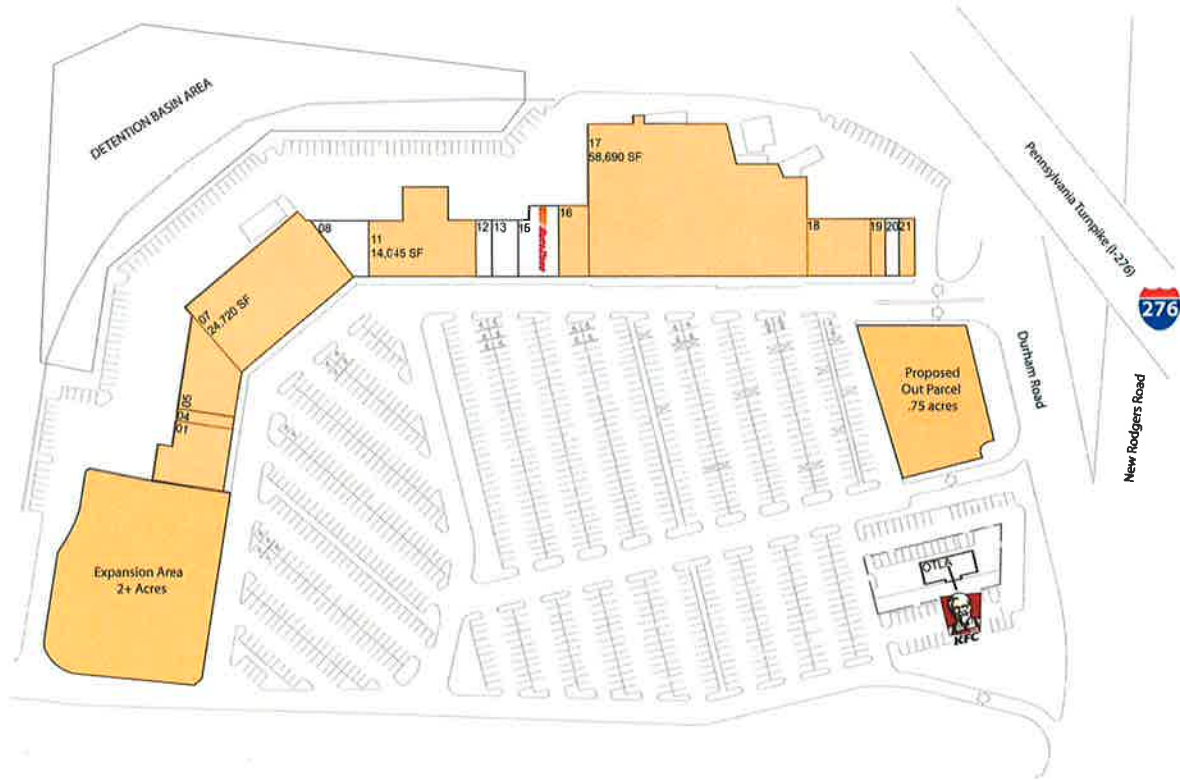


# Bristol Plaza - Bristol

2603 Durham Road | Bristol, PA 19007 40.12644533, -74.88442327



**Center Size:** 145,356 SF

6449

### Available Space

01	7,840 SF	16	4,000 SF
04	1,340 SF	17	58,690 SF
05	7,856 SF	18	7,060 SF
07	24,720 SF	19	1,200 SF
11	14,045 SF	21	1,600 SF

### Current Retailers

08	Laundromat	3,339 SF
12	Primo Hoagies	1,600 SF
13	Bristol Hair & Wig	2,800 SF
15	AutoZone	5,200 SF
20	Hong Kong Restaurant	1,600 SF
OTLA	KFC	2,466 SF

**Roddy Inc.**

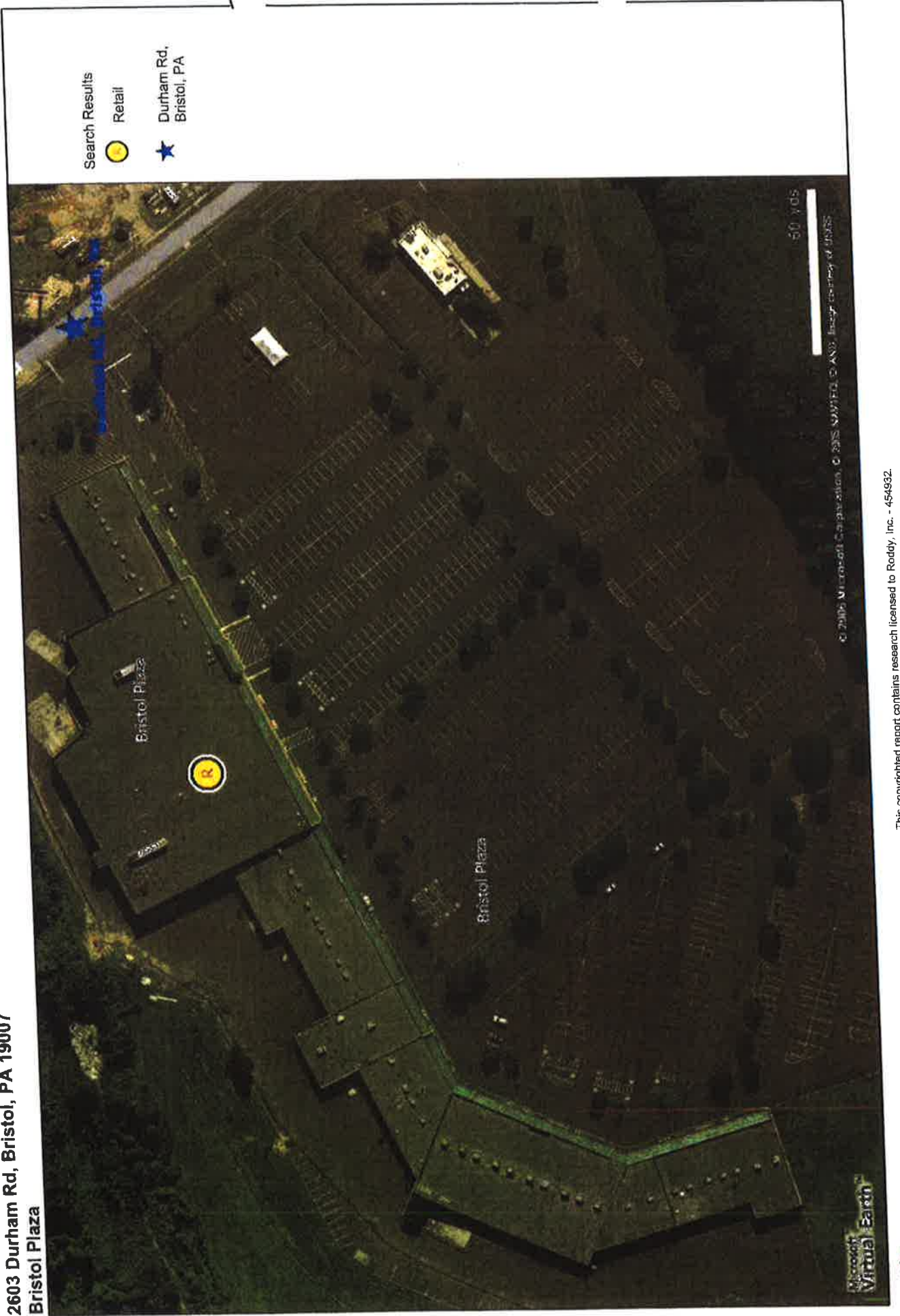
*Industrial & Commercial Realtors*



Glenview Corporate Center  
 3220 Tillman Drive, Suite 112  
 Bensalem, Pennsylvania 19020-2028  
 Ph: 215.245.2600  
 Fax: 215.245.2670  
 email: realestate@roddyinc.com

# BRISTOL PLAZA

2603 Durham Rd, Bristol, PA 19007  
Bristol Plaza

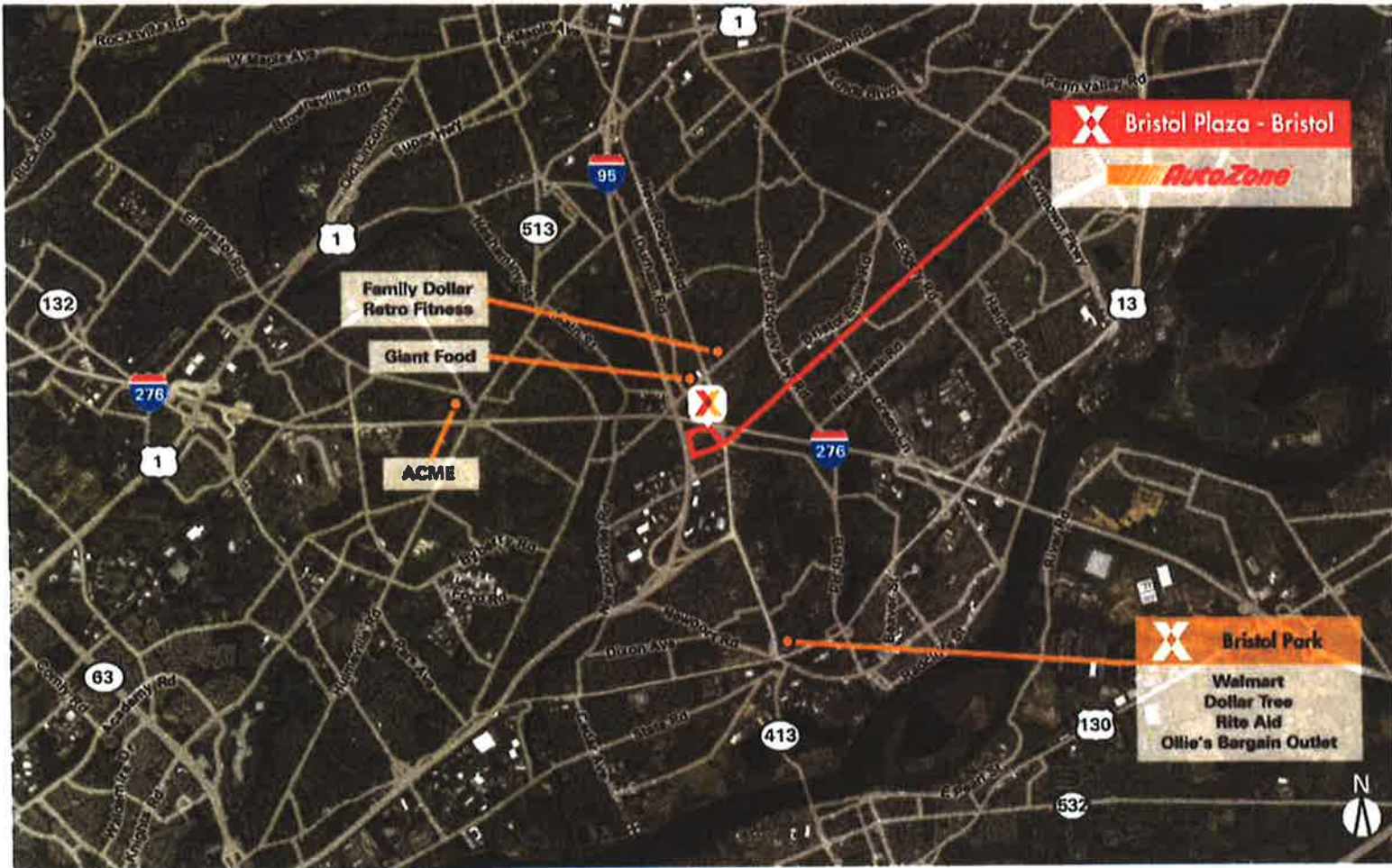


This copyrighted report contains research licensed to Roddy, Inc. - 454932.



# Bristol Plaza - Bristol

2603 Durham Road | Bristol, PA 19007 40.12644533, -74.88442327



Center Size: 145,356 SF

644

	1 Mile	3 Mile	5 Mile
<b>Population</b>	9,487	100,415	225,412
<b>Households</b>	3,756	37,054	84,186
<b>Average HH Income</b>	63,628	74,164	75,269

Managed Only

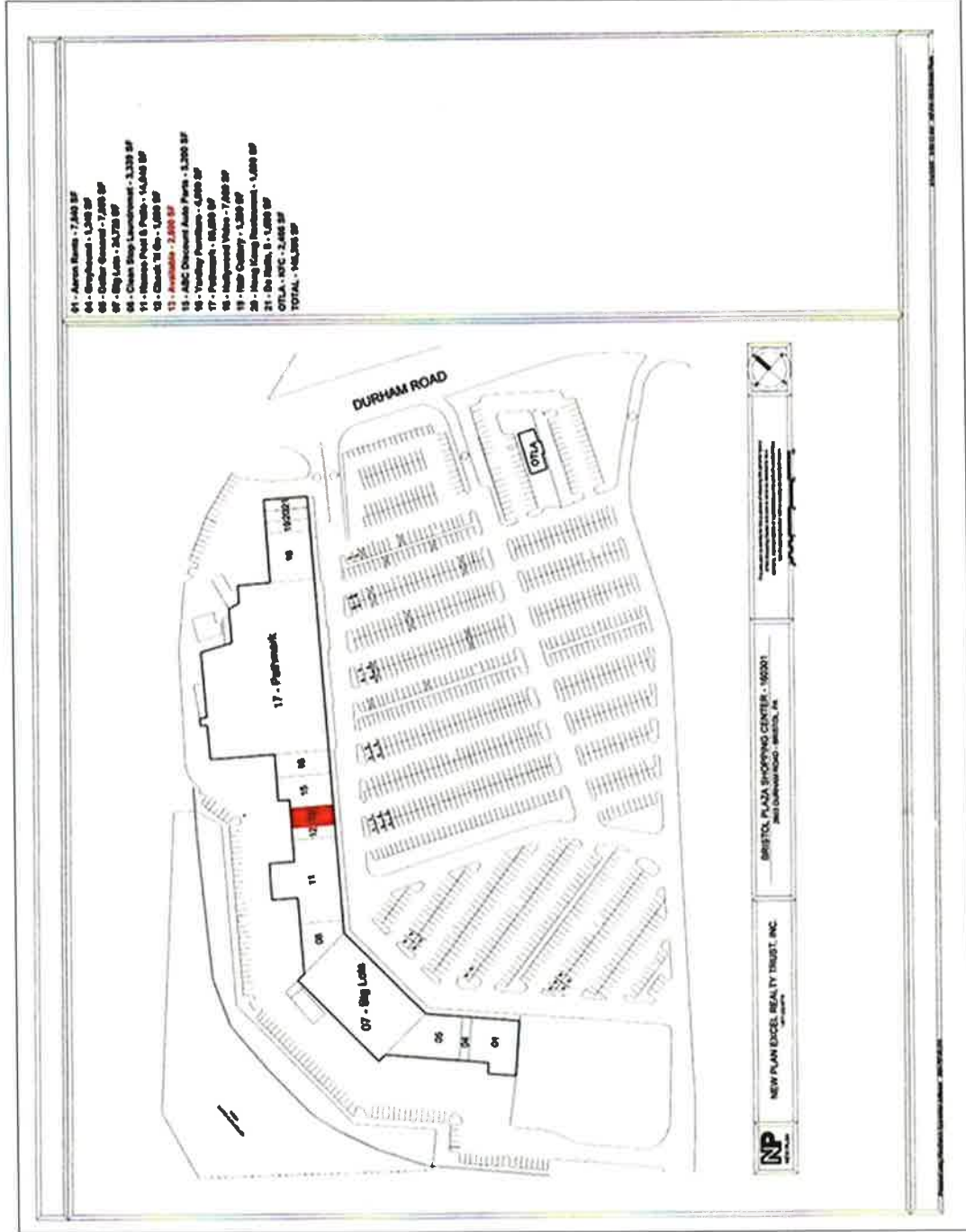
Surrounded by a dense population of 101,000+ residents in 38,000+ households with average household income of \$67,000+ within 3 miles

High visibility from 27,000 vehicles daily

Improved accessibility with new I-95 exit and expansion of Route 13 and Route 413, along with PA Turnpike and Burlington Bristol Bridge



# 2603 Durham Rd - Bristol Plaza



This copyrighted report contains research licensed to Roddy, Inc. - 454932.