

PRIME BUCKS COUNTY FACILITY VICINITY OF I-95 AND US ROUTE 1

AVAILABLE - 54,367 Square Feet on 11.92 Acres - DIVISIBLE



355 S. Flowers Mill Road, Middletown Township, Langhorne, Bucks County, PA

SIZE OF BUILDING: Approx. 54,367 square feet with approvals in place to expand the building to a total of 69,367 square feet.

LOT SIZE:	Tax Parcel #1:	Approximately 5.44 acres
	Tax Parcel #2:	Approximately 6.48 acres
	TOTAL:	Approximately 11.92 acres

DESCRIPTION: Modern two story insulated pre-engineered building.

AGE OF BUILDING: Constructed in 1976.

SIZE OF BUILDING: Approximately 54,367 square feet (Approvals in place to expand building by 15,000 square feet).

CONSTRUCTION: Exterior walls consist of insulated steel panel to the roofline.

PARKING: Macadam paved parking for 130 automobiles (Approvals in place to expand to 160 spaces).

COLUMN SPACING: Clear span throughout (120').

LOADING: Tailgate: Four (4) electrically operated, insulated steel sectional tailgate loading doors, measuring 8' x 10'. All doors contain hydraulic levelers, air curtains, vision panels and dock lights. **Drive-In:** Three (3) electrically operated, insulated steel sectional drive-in doors. One (1) measures 10' x 10' and features vision panels. Two (2) measure 8' x 8'.

FLOOR: 6" concrete floor over crushed stone base (6,000 PSI rating) with exception of approximately 4,725 square feet which is macadam.

ROOF: Galvanized sheet metal roof coated with Andek Polaroof AC elastic coating. The southern half of the roof was re-coated in 2006, and the northern half in 2007. Each application of the Andek Polaroof AC coating carries a ten (10) year manufacturer's warranty.

CEILING HEIGHT: Approximately 36'4" sloping to 15'9" clear under steel purlins.

HVAC: Office Area: Heated and cooled by a Carrier split system installed in 2006. **Plant/Warehouse Area:** Heated by natural gas fired blower units.

INTERIOR LIGHTING: A combination of metal halide and T5 lighting fixtures.

EXTERIOR LIGHTING: Wall and pole mounted fixtures.

TOILET FACILITIES: Office Area: First Floor - One (1) ladies' and three (3) men's rooms.

Second Floor - One (1) executive restroom; one (1) ladies' and one (1) men's room.

Plant/Warehouse: One (1) restroom.

Plumbing in place to create additional restrooms.

ELECTRICAL SERVICE: 400 amp, 480/277 volt, 3 phase service provided by PECO.

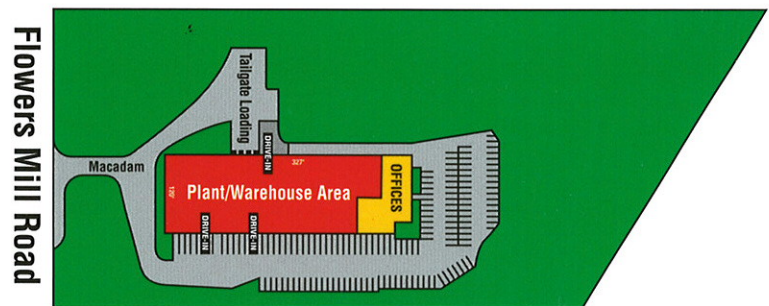
OFFICE AREA: Approximately 20,238 square feet between two floors.

GAS SERVICE: Five (5) lb pressure service; supplied by PECO.

ZONING: M-1 - Light Manufacturing

S I T E P L A N

NOTE: Plan is not to scale



Roddy

Industrial & Commercial Realtors

realestate@roddyinc.com

(215) 245.2600



Visit this property and others on our website at www.roddyinc.com

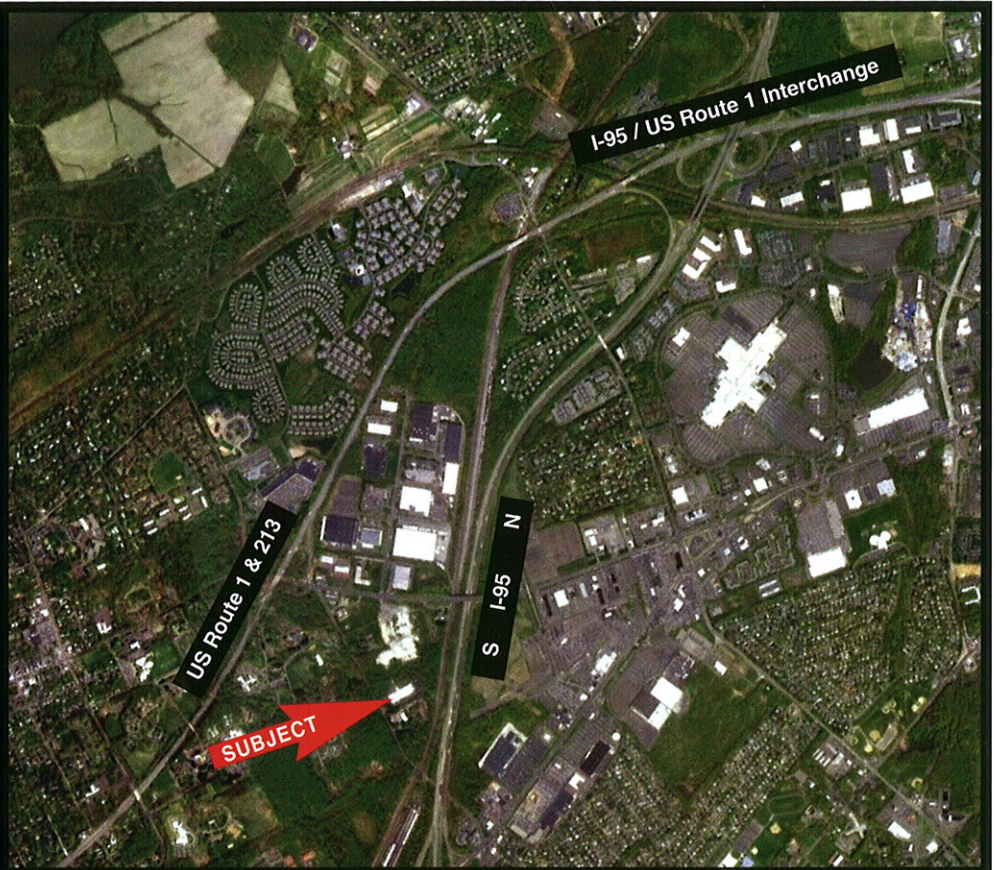
All information furnished regarding property for sale or rental is from sources deemed reliable, but no warranty or representation is made as to the accuracy thereof, and same is submitted subject to errors, omissions, change of price, or other conditions, prior sale or lease or withdrawal without notice. No liability of any kind is to be imposed on the Broker herein.

LOCATION: Strategically located at the Route 213 Exit (Maple Avenue) of US Route 1 and offering immediate access to Interstate 95, the Pennsylvania Turnpike (Interstate 276) and the New Jersey Turnpike (Interstate 95) as well as bridges to New Jersey.

AIRPORT: The Philadelphia International Airport is forty (40) minutes away, Northeast Philadelphia Airport is twenty (20) minutes away, Newark International Airport is seventy (70) minutes away and Trenton-Mercer Airport is twenty (20) minutes away.

PUBLIC TRANSPORTATION: The West Trenton Regional Rail Line stops at the Langhorne Train Station where connection can be made with SEPTA Bus 14 or 129 which provides service within a ten (10) minute walk from the property. The West Trenton Regional Rail Line offers service between Center City Philadelphia, Jenkintown and West Trenton, NJ.

HOTELS: Most major hotels are represented in the area within a five (5) to ten (10) minute drive.



Glenview Corporate Center
3220 Tillman Dr. Suite 112
Bensalem, PA 19020-2028
Ph (215) 245-2600, Fax (215) 245-2670
email: realestate@roddyinc.com
website: www.roddyinc.com

Industrial & Commercial Realtors

Roddy

