

AVAILABLE

PRIME NORTHEAST PHILADELPHIA FACILITIES

ADJACENT TO US 1, ROUTE 63, I-95, PA TURNPIKE & NJ BRIDGES

275-299 GEIGER ROAD • UP TO 50,000 SQUARE FEET (CRANE SERVED) • FOR LEASE



LOT SIZE: Approx. 8.0 Acres.

DESCRIPTION: Modern one (1) story manufacturing and distribution facility.

SIZE OF BUILDING: Approx. 89,500 sq. ft. Available Unit: Up to approx. 50,000 sq. ft.

PARKING: One hundred two (102) macadam-paved automobile spaces (Expandable).

AGE OF BUILDING: Constructed in 1979.

CONSTRUCTION: Walls: Office: Split face block on three (3) sides. Plant/Warehouse: 12" concrete block and insulated metal panel.

FLOORS: Office: Assumed but not verified to be 4" concrete slab on grade over crushed stone.

Plant/Warehouse: Assumed but not verified to be 6" concrete slab reinforced with 6" x 6" 8/8 wire mesh.

ROOF: Built-up roofing system over 2" rigid insulation on 1 1/2", 22 gauge metal deck installed 2006 with a ten (10) year warranty.

CEILING HEIGHT: Plant/Warehouse: Approx. 22' 7" sloping to 21' 8" clear.

COLUMN SPACING: Mostly 40' x 45'.

LOADING: West Elevation: Tailgate: Six (6) tailgate docks with 8' x 10' electrically operated steel roll up doors, all of which have edge of dock levelers, interior bollards and dock seals. Loading platform measuring 20' x 20' with access to building, facilitated by one (1) 12' x 14' manually operated metal overhead door. **Drive-In:** Access to building, facilitated by one (1) 14' x 16' electrically operated metal roll-up door. **Rear Elevation: Tailgate:** One (1) tailgate dock with 10' x 10' manually operated metal overhead door. Covered loading platform measuring 15' x 100' with access to building, facilitated by two (2) 10' x 10' manually operated metal overhead doors.

CRANE SERVICE: One (1) 10 ton "Philadelphia Tramrail Company" pendant operated crane; 45' span; approximate 16' clearance under hook.

SPRINKLER SERVICE: 100% wet system serviced by 6" main, service provided by Philadelphia Water Department.

HVAC: Office: Centrally heated and air conditioned by a 10-ton combination rooftop natural gas-fired unit, distributed through ceiling diffusers. Perimeter hot water heat supplied from "Weil McLain" gas-fired boiler.

Plant/Warehouse: Self-contained natural gas-fired "Reznor" unit heaters supplemented by natural gas-fired ceiling suspended radiant infrared units. Ventilation provided by ceiling mounted electric powered vents throughout.

ELECTRIC: 13,200 volt high tension service. There is one (1) 750 KVA transformer supplying 1200 amp, 480/277 volt, 3 phase 3 wire service. There are four (4) runs of bus duct distribution throughout. Service is provided by PECO Energy.

ZONING: I-2 Medium Industrial.

ASSESSMENT: \$2,600,000 (2016)

REAL ESTATE TAXES: \$36,394.80 or \$0.41 psf (2016)

USE & OCCUPANCY: \$31,460.00 or \$0.35 psf (2016)

STORMWATER: \$25,919.40 or \$0.29 psf (2016)

9999 GLOBAL ROAD • 22,900 SQUARE FEET • FOR SALE



LOT SIZE: Approx. 0.91 acres.

DESCRIPTION: Modern one (1) story industrial building with two-story offices.

SIZE OF BUILDING: Approx. 22,900 sq. ft. **Office Area:** Approx. 5,800 sq. ft. on two (2) floors. **Plant/Warehouse:** Approx. 17,100 sq. ft.

PARKING: Macadam paved parking for approx. ten (10) automobiles.

AGE OF BUILDING: Constructed in 1973 with additions in 1976 and 1996.

CONSTRUCTION: Walls: Front: Brick over block. **Sides/Rear:** Painted concrete block. Windows along Plant/Warehouse wall allow for natural light. **Floor:** Assumed but not verified to be 6" reinforced concrete.

CEILING HEIGHT: Approx. 16'6" sloping to 16'0" clear under bar joist.

COLUMN SPACING: Varies.

LOADING: Tailgate: Two (2) 8' x 10' electrically-operated, insulated steel section doors with dock seals and bumpers; one (1) mechanically-operated load leveler and one (1) edge-of-dock leveler. **Drive-In:** One (1) 10' x 10' manually-operated steel roll-up door.

HVAC: Office Area: Centrally heated and air-conditioned by two (2) ten (10) ton Rheem natural gas-fired rooftop package units installed 2014 with five (5) year compressor warranty. **Plant/Warehouse:** Centrally heated and air-conditioned by four (4) 7.5 ton Rheem natural gas-fired package units installed 2014 with five (5) year compressor warranty. Supplemented by self-contained natural gas-fired blower unit over loading area.

ELECTRIC: 13,200 volt high tension service. There is one (1) 300 KVA transformer supplying 800 and 2000 amps, 120/208 and 277/480 volt, 3 phase; service provided by PECO Energy.

INTERIOR LIGHTING: Metal halide lighting fixtures.

EXTERIOR LIGHTING: Wall mounted fixtures.

WATER: 2" line connecting to 8" main; service provided by Philadelphia Water & Sewer Department.

SEWER: 10" sanitary main, 36" storm water main; service provided by Philadelphia Water & Sewer Department.

GAS: 2" line connected to a 6" main; service supplied by Philadelphia Gas Works.

ZONING: I-2 Medium Industrial

ASSESSMENT: \$982,300 (2016)

REAL ESTATE TAXES: \$13,750.24 or \$0.60/SF (2016)

USE & OCCUPANCY: \$11,885.83 or \$0.52/SF (2016)

STORMWATER: \$3,952.80 or \$0.17/SF (2016)

Visit this property and others on our website at www.rododync.com
(215) 245-2600 • email: realestate@rododync.com

All information furnished regarding property for sale or rental is from sources deemed reliable, but no warranty or representation is made as to the accuracy thereof, and same is submitted subject to errors, omissions, change of price, or other conditions, prior sale or lease or withdrawal without notice. No liability of any kind is to be imposed on the Broker herein.



Industrial & Commercial Realtors

LOCATION

Situated in Northeast Philadelphia offering excellent access to major transportation routes. Route 1 (Roosevelt Boulevard), I-276 (Pennsylvania Turnpike Interchange 28), I-95 (Delaware Expressway), Route 63 (Woodhaven Road). Access to New Jersey via the Tacony-Palmyra, Betsy Ross, Burlington-Bristol and Turnpike Bridges.

AIRPORT

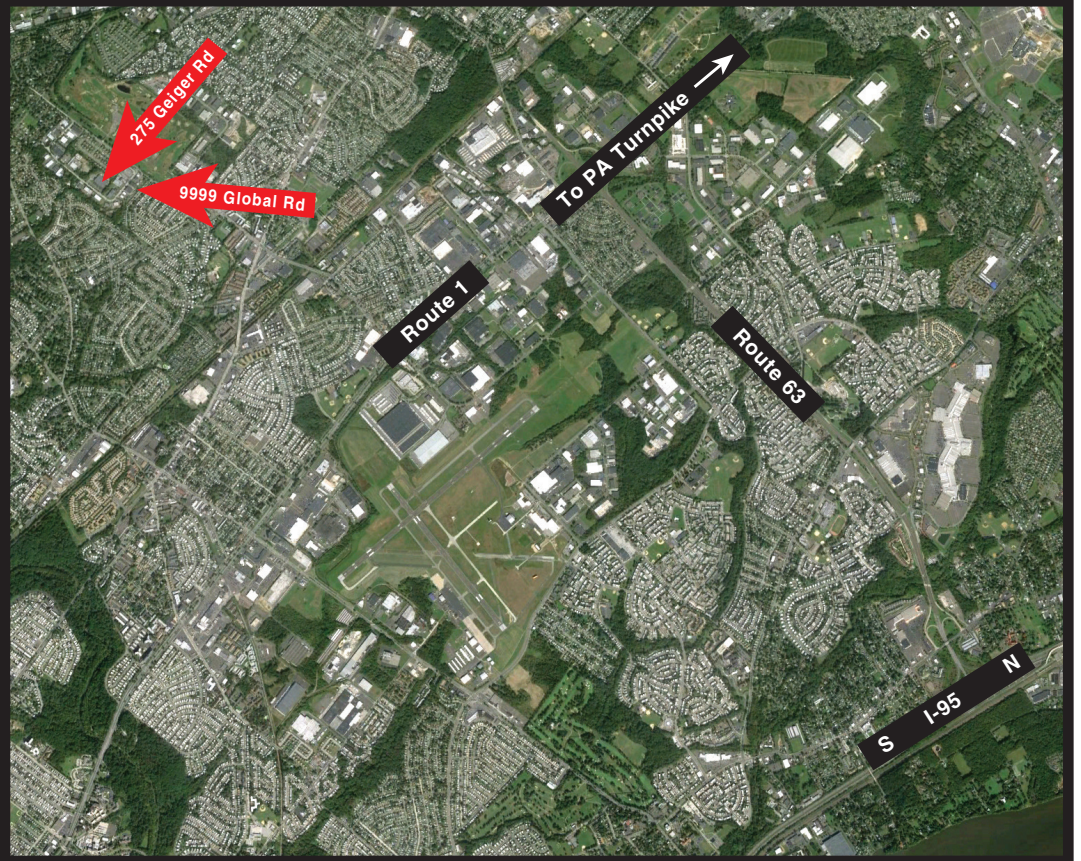
Philadelphia International Airport (PHL) is forty-five (45) minutes south and the Northeast Philadelphia Airport (PNE) is ten (10) minutes north.

HOTELS

Most major hotels are represented in the area within a five (5) to ten (10) minute drive.

PUBLIC TRANSPORTATION

SEPTA Bus 67 offers service from Frankford Transportation Center to Sandmeyer Lane and Red Lion Road, a short distance from the properties.



Glenview Corporate Center
3220 Tillman Dr. Suite 112
Bensalem, PA 19020-2028
Ph (215) 245-2600, Fax (215) 245-2670
email: realestate@roddyinc.com
website: www.roddyinc.com

Industrial & Commercial Realtors

