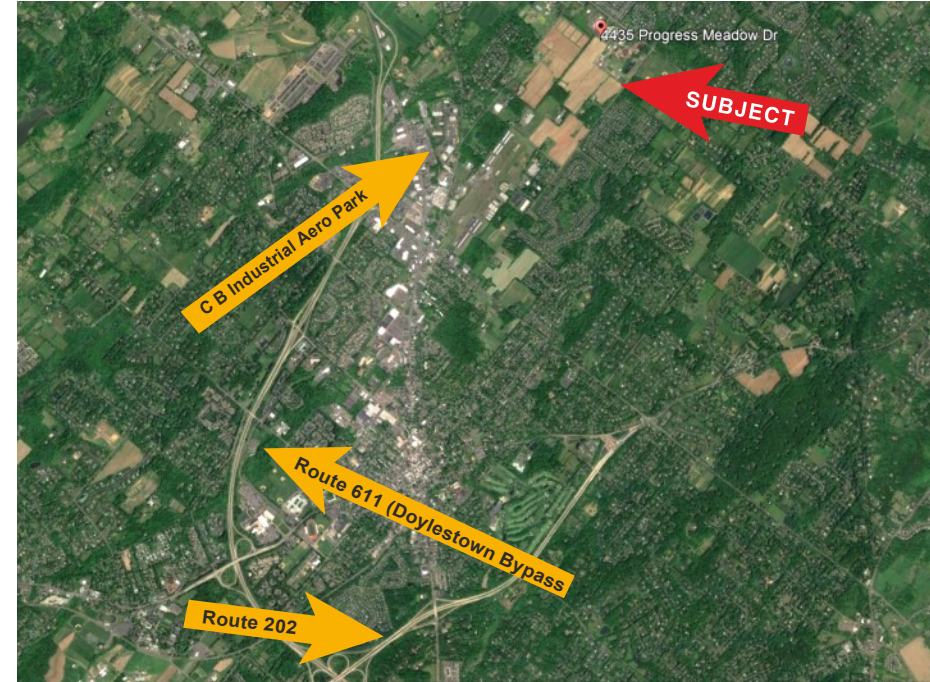


# 57.33 ACRE DEVELOPMENT OPPORTUNITY

4344 Cold Spring Creamery Road, Doylestown, Bucks County, PA



- Large industrial site in Bucks County.
- Ideally located in the desirable suburban Philadelphia marketplace.
- Property is within close proximity to downtown Doylestown, the county seat of Bucks County.
- Location provides access to regional highways including Route 611, Route 202 and Route 309.
- Excellent development opportunity for distribution, warehouse, flex, corporate headquarters and medical/healthcare uses.



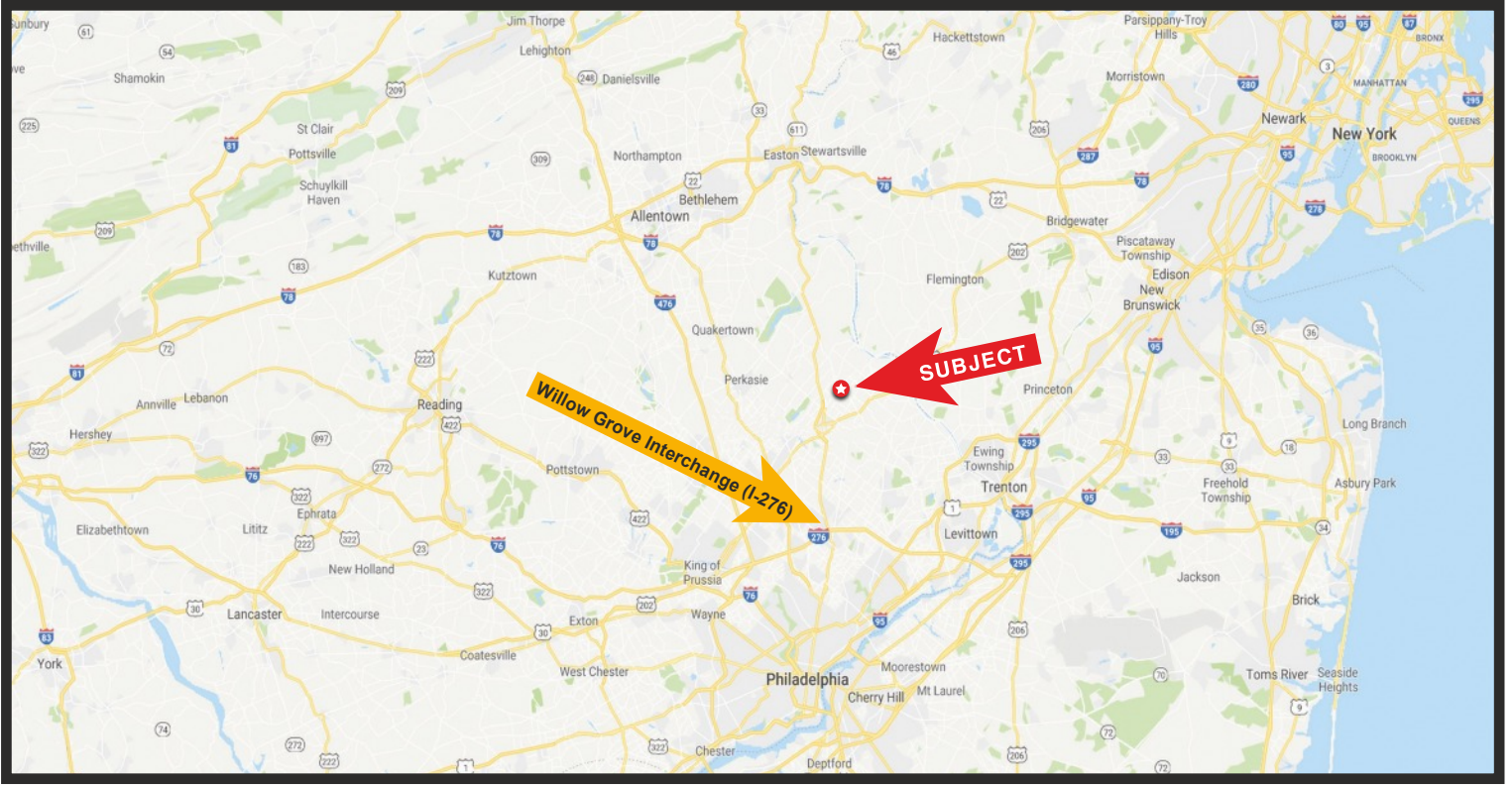
Industrial & Commercial Real Estate

Glenview Corporate Center  
3220 Tillman Dr. Suite 403  
Bensalem, PA 19020-2028  
Ph (215) 245-2600,  
Fax (215) 245-2670  
realestate@roddyinc.com

Visit this property and others at  
[www.roddyinc.com](http://www.roddyinc.com)

All information furnished regarding property for sale or rental is from sources deemed reliable, but no warranty or representation is made as to the accuracy thereof, and same is submitted subject to errors, omissions, change of price, or other conditions, prior sale or lease or withdrawal without notice. No liability of any kind is to be imposed on the Broker herein.





Glenview Corporate Center  
3220 Tillman Dr. Suite 403  
Bensalem, PA 19020-2028  
Ph (215) 245-2600, Fax (215) 245-2670  
email: [realestate@roddyinc.com](mailto:realestate@roddyinc.com)  
website: [www.roddyinc.com](http://www.roddyinc.com)

*Industrial & Commercial Real Estate*

